



In This Issue:

BERARD
SINCE 1945
The Mega Transport Experts

- > The Shipyard | Moving Stim Star Mexico
- > Power Up! | Berard Delivers Power Components
- > Team Member Spotlight | Klinton Burkett

The Shipyard Moving Stim Star Mexico



Job Specs

Weight: 3,600 Tons

Dimensions:

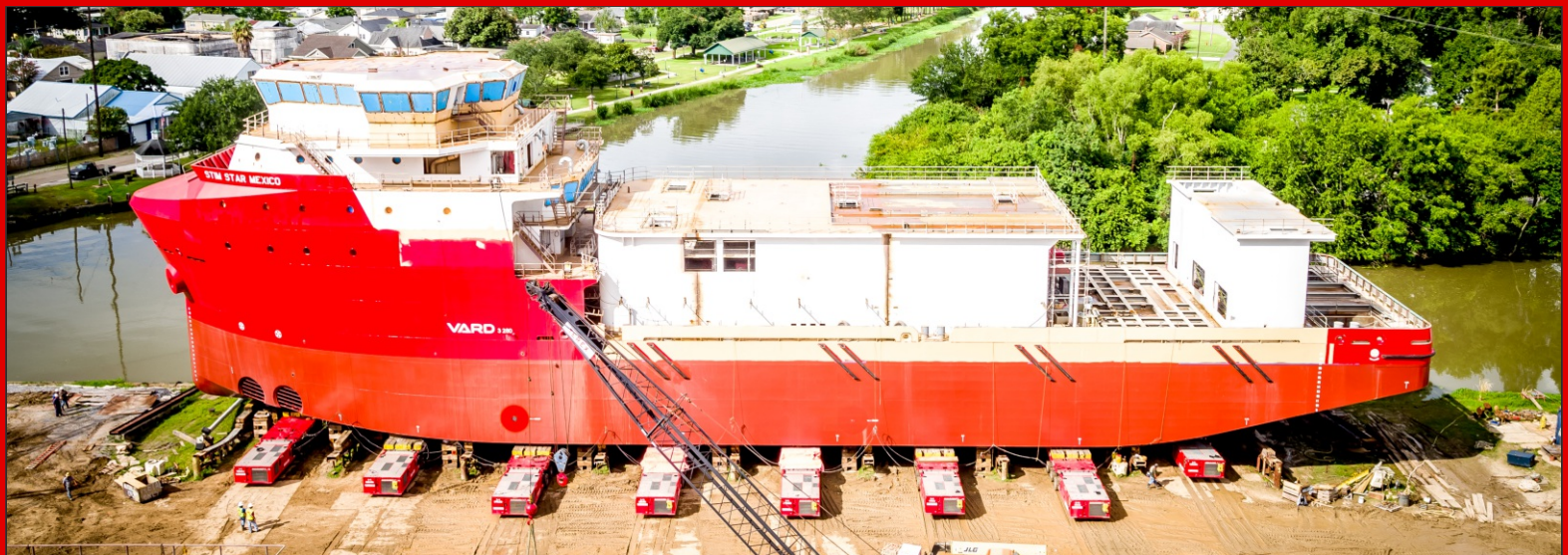
270' L x 60' W x 76' H

Equipment Used:

110 axle lines of SPMTs, 8 power packs, crane mats & steel plating

When this massive behemoth needed to get to the launch, Berard heeded the call to get the job done. The team transported the 3,600 ton, 270' long offshore vessel from its fabrication site to the client's launch system so it could be launched in the next few days. SPMTs were configured in such a way to fit between the launch beams. Crane mats and wedges were placed on top of the SPMTs to support the vessel as the team lifted it from its support stands. Now lifted, the vessel slowly moved through the client's yard. Now at the launch, the team aligned and lowered the vessel onto the beams. Two days later, the vessel hit the water and soon it'll be ready to go to work. Thanks to our great team members and our client who worked hard to make this project another safe and successful one!





Power Up! Berard Delivers Power Components



Job Specs

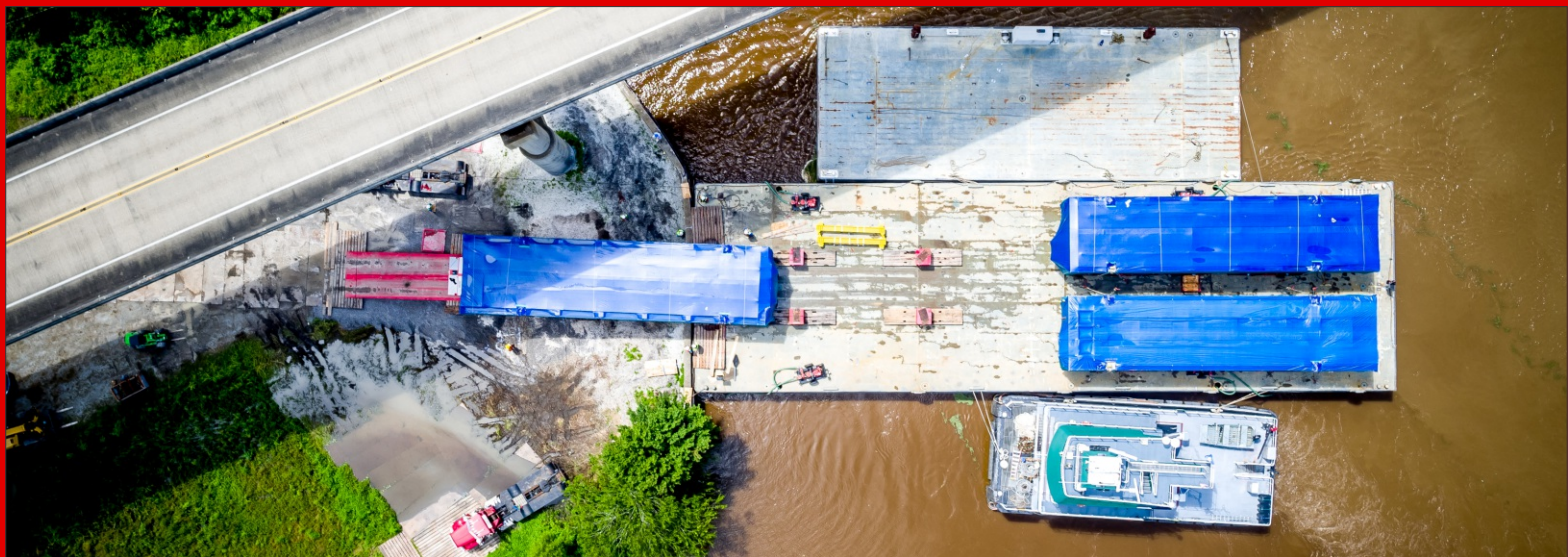
Weight: 239,785 lbs.

Dimensions:
78' L x 19' W x 14'H

Equipment Used:
12 axle lines of SPMTs, 2 deck barges, barge ramps, water pumps, winch trucks, matting & steel plate

Unique delivery solutions are not so unique to Berard. These 5 HRSG modules and 1 vessel were to be delivered to a new power plant near Franklin, LA. Berard derived a solution using a bridge embankment as a roll-off site. Furthermore, the roll-off site was directly on the highly trafficked Gulf Intracoastal Waterway. Working with the US Coast Guard, Berard developed a barging and roll-off plan which allowed for safe offloading while not impeding channel traffic. A year's worth of planning involving 4 government agencies proved worthwhile for the 2 day execution in roll-off at the site.





Klinton Burkett

Business Development Mobile, Alabama



Klinton Burkett joined the Berard Team in September of 2015 and has been full throttle ever since. Klinton serves as business development in our Mobile, Alabama office and covers the Gulf and Eastern coasts. A 2008 graduate of Auburn University, he began his career in the heavy haul/lifting industry right out of college. He says "What I like about the job is that no day is ever the same. I enjoy the opportunity to help customers solve problems and make lifelong relationships with customers. I like to sell and execute jobs that the normal person cannot fathom. What I like about Berard is the family value atmosphere. I'm not just a number, but seen as a person who contributes to the growth/expansion of a great team." Klinton's hobbies include spending time at the beach with his wife, fishing and boat riding, anything to do with the great outdoors, watching college athletics, and spending time with his two dogs, Dixon and Ellie.



Happy Birthday!

From The Berard Team

Happy Birthday to These Dedicated Team Members!

**Cheryll Berard
Clay Bonnet
Brad Courville
George Doucet**

**Anthony Roth
Katty Solis Distefano
Tim Wilson
Shamery Mortensen**